

**MobyDick ConLine KIT Plus**  
rugged, functional, efficient



Greater Performance for  
High Expectations

**FRUTIGER**  
a whale, a promise!

[www.mobydick.com](http://www.mobydick.com)

## Wheel Washing System KIT Plus

**MobyDick ConLine** | KIT Plus is a wide product range of mobile and Fixed solutions for sites with high numbers of trucks. These modern drive-through systems are based on the results from over 30 years experience with wheel washing systems and offer an attractive price-to-performance ratio, alongside the benefits of the classic MobyDick. All ConLine Plus systems are quick and easy to install and require only minimal maintenance.

[www.mobydick.com](http://www.mobydick.com)

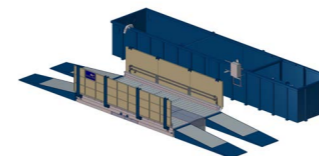


Efficient cleaning thanks to leading MobyDick technology.

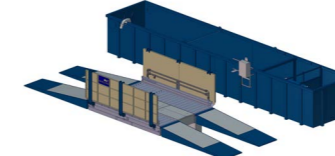


Equipped with ramps mobile operation is possible.

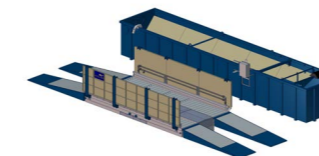
### Mobile Models: Ready in a matter of hours



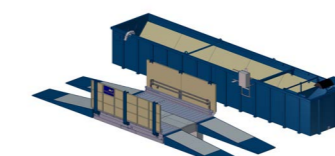
KIT Plus 600 MB-50P



KIT Plus 400 MB-50P

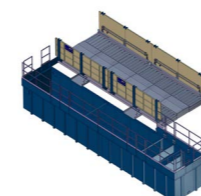


KIT Plus 600 MC-50P (Scraper Conveyor)

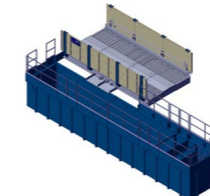


KIT Plus 400 MC-50P (Scraper Conveyor)

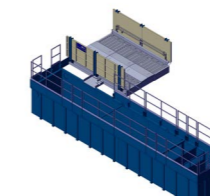
### Stationary Models: For maximum functionality and simple installation



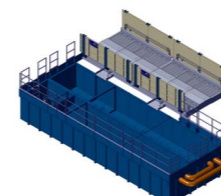
KIT Plus 800 B-50P



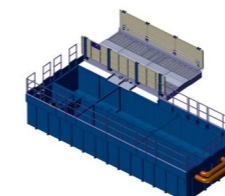
KIT Plus 600 B-50P



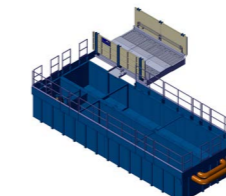
KIT Plus 400 B-50P



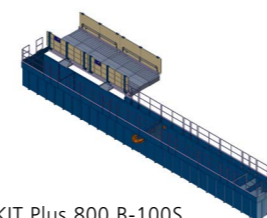
KIT Plus 800 B-100P



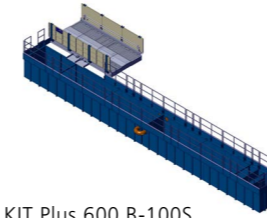
KIT Plus 600 B-100P



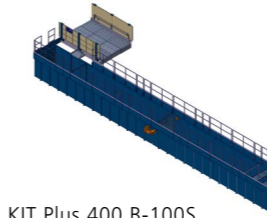
KIT Plus 400 B-100P



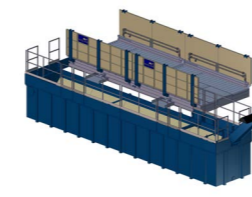
KIT Plus 800 B-100S



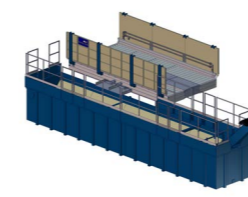
KIT Plus 600 B-100S



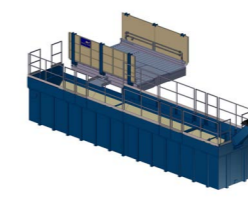
KIT Plus 400 B-100S



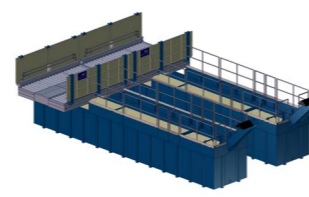
KIT Plus 800 C-50P (Scraper Conveyor)



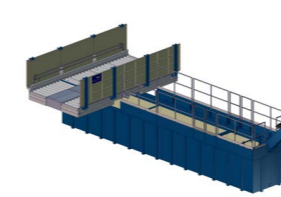
KIT Plus 600 C-50P (Scraper Conveyor)



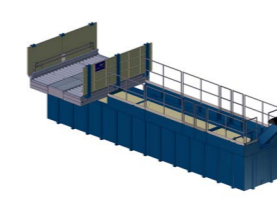
KIT Plus 400 C-50P (Scraper Conveyor)



KIT Plus 800 C-100Q (Scraper Conveyor)



KIT Plus 600 C-50Q (Scraper Conveyor)



KIT Plus 400 C-50Q (Scraper Conveyor)

### Popular Options

#### MobyDos Compact (Flocculent Dosing System)

A compact dosing system for the automatic addition of the flocculant ensures that contaminated water is cleared effectively and quickly.



#### MobyDos Compact & Container

The container, with integrated flocculant dosing, protects the flocculant and the electronics from weathering.



#### Chassis Wash

Additional jets between the washing elements enable intensive cleaning of the undercarriage.



#### Backwash (Exit Area Backwash System)

Side nozzle bars in the exit area backwash the dripping dirty water of the exiting vehicles back into the system.



#### Manual Wash (Hose and Lance)

A mechanism for additional manual cleaning of vehicle superstructures, devices and for the area surrounding the wheel washing system.



#### Drip Pad (Excess Water Collecting System)

The drip pad connected to the washing area minimises the discharge of water onto the public road and reduces water loss.



## Performance data

Tank versions

P = parallel

Q = transverse

S = serial

### Models

| KIT Plus 400 B-50P | KIT Plus 400 B-100P | KIT Plus 400 B-100S | KIT Plus 400 C-50P | KIT Plus 400 C-50Q | KIT Plus 400 MB-50P | KIT Plus 400 MC-50P | KIT Plus 600 B-50P | KIT Plus 600 B-100P | KIT Plus 600 B-100S | KIT Plus 600 C-50P | KIT Plus 600 C-50Q | KIT Plus 600 MB-50P | KIT Plus 600 MC-50P | KIT Plus 800 B-50P | KIT Plus 800 B-100P | KIT Plus 800 B-100S | KIT Plus 800 C-50P | KIT Plus 800 C-100Q |
|--------------------|---------------------|---------------------|--------------------|--------------------|---------------------|---------------------|--------------------|---------------------|---------------------|--------------------|--------------------|---------------------|---------------------|--------------------|---------------------|---------------------|--------------------|---------------------|
|--------------------|---------------------|---------------------|--------------------|--------------------|---------------------|---------------------|--------------------|---------------------|---------------------|--------------------|--------------------|---------------------|---------------------|--------------------|---------------------|---------------------|--------------------|---------------------|

## Complete truck wheel washing system

| Wash unit and nozzle configuration incl.             |   |   |   |   |   |   |   |   |   |   |   |   |   |   |   |   |   |   |   |
|--|---|---|---|---|---|---|---|---|---|---|---|---|---|---|---|---|---|---|---|
| - Water-bearing construction                         | ✓ | ✓ | ✓ | ✓ | ✓ | ✓ | ✓ | ✓ | ✓ | ✓ | ✓ | ✓ | ✓ | ✓ | ✓ | ✓ | ✓ | ✓ | ✓ |
| - Galvanised construction                            | ✓ | ✓ | ✓ | ✓ | ✓ | ✓ | ✓ | ✓ | ✓ | ✓ | ✓ | ✓ | ✓ | ✓ | ✓ | ✓ | ✓ | ✓ | ✓ |
| - Angle sections with floor nozzles (profile washes) | ✓ | ✓ | ✓ | ✓ | ✓ | ✓ | ✓ | ✓ | ✓ | ✓ | ✓ | ✓ | ✓ | ✓ | ✓ | ✓ | ✓ | ✓ | ✓ |
| - Horizontal double-sided nozzle bars                | ✓ | ✓ | ✓ | ✓ | ✓ | ✓ | ✓ | ✓ | ✓ | ✓ | ✓ | ✓ | ✓ | ✓ | ✓ | ✓ | ✓ | ✓ | ✓ |
| - Splash protection walls                            | ✓ | ✓ | ✓ | ✓ | ✓ | ✓ | ✓ | ✓ | ✓ | ✓ | ✓ | ✓ | ✓ | ✓ | ✓ | ✓ | ✓ | ✓ | ✓ |
| Recycling tank package                               | ✓ | ✓ | ✓ | ✓ | ✓ | ✓ | ✓ | ✓ | ✓ | ✓ | ✓ | ✓ | ✓ | ✓ | ✓ | ✓ | ✓ | ✓ | ✓ |
| Recycling tank wall extensions                       | ✓ | ✓ | ✓ | ✓ | ✓ | - | - | ✓ | ✓ | ✓ | ✓ | - | - | ✓ | ✓ | ✓ | ✓ | ✓ | ✓ |
| Safety rail for recycling tank                       | ✓ | ✓ | ✓ | ✓ | ✓ | - | - | ✓ | ✓ | ✓ | ✓ | - | - | ✓ | ✓ | ✓ | ✓ | ✓ | ✓ |
| Scraper Conveyor for recycling tank                  | - | - | - | 1 | 1 | - | 1 | - | - | - | 1 | 1 | - | 1 | - | - | - | 1 | 2 |
| MobyPump washing pumps                               | 2 | 2 | 2 | 2 | 2 | 1 | 1 | 3 | 3 | 3 | 3 | 2 | 2 | 4 | 4 | 4 | 4 | 4 | 4 |
| Optic sensor start initiation                        | ✓ | ✓ | ✓ | ✓ | ✓ | ✓ | ✓ | ✓ | ✓ | ✓ | ✓ | ✓ | ✓ | ✓ | ✓ | ✓ | ✓ | ✓ | ✓ |
| Pump for backwashing the dirty water                 | - | - | - | - | - | 1 | 1 | - | - | - | - | 2 | 2 | - | - | - | - | - | - |
| Complete ramp set (entry and exit ramps)             | - | - | - | - | - | ✓ | ✓ | - | - | - | - | ✓ | ✓ | - | - | - | - | - | - |

## Specifications and technical data

|   |      |      |      |      |      |      |      |      |      |      |      |      |      |      |      |      |      |      |      |
|---|------|------|------|------|------|------|------|------|------|------|------|------|------|------|------|------|------|------|------|
| Length of the wash unit [cm]                        | 400  | 400  | 400  | 400  | 400  | 400  | 400  | 600  | 600  | 600  | 600  | 600  | 600  | 800  | 800  | 800  | 800  | 800  | 800  |
| Clear drive through width of the wash unit [cm]     | 280  | 280  | 280  | 280  | 280  | 280  | 280  | 280  | 280  | 280  | 280  | 280  | 280  | 280  | 280  | 280  | 280  | 280  | 280  |
| Maximum axle load [t]                               | 15   | 15   | 15   | 15   | 15   | 15   | 15   | 15   | 15   | 15   | 15   | 15   | 15   | 15   | 15   | 15   | 15   | 15   | 15   |
| Height of splash walls [cm]                         | 136  | 136  | 136  | 136  | 136  | 136  | 136  | 136  | 136  | 136  | 136  | 136  | 136  | 136  | 136  | 136  | 136  | 136  | 136  |
| Nozzles (min. 7 mm core diameter)                   | 130  | 130  | 130  | 130  | 130  | 112  | 112  | 226  | 226  | 226  | 226  | 226  | 198  | 198  | 260  | 260  | 260  | 260  | 260  |
| Nozzle bars per side                                | 2    | 2    | 2    | 2    | 2    | 2    | 2    | 2    | 2    | 2    | 2    | 2    | 2    | 2    | 2    | 2    | 2    | 2    | 2    |
| Recycling tank volume [m³]                          | 50   | 100  | 100  | 50   | 50   | 50   | 50   | 50   | 100  | 100  | 50   | 50   | 50   | 50   | 100  | 100  | 50   | 100  | 100  |
| Service water useful volume [m³]                    | 35   | 70   | 70   | 30   | 30   | 35   | 30   | 35   | 70   | 70   | 30   | 30   | 35   | 30   | 35   | 70   | 70   | 30   | 60   |
| Clarification area recycling tank [m²]              | 25,5 | 51,0 | 51,0 | 25,5 | 25,5 | 25,5 | 25,5 | 25,5 | 51,0 | 51,0 | 25,5 | 25,5 | 25,5 | 25,5 | 51,0 | 51,0 | 25,5 | 51,0 | 51,0 |
| Ejection height of chain conveyor above ground [cm] | -    | -    | -    | 105  | 105  | -    | 305  | -    | -    | -    | 105  | 105  | -    | 305  | -    | -    | -    | 105  | 105  |
| Maximum pump power [m³/min]                         | 5,0  | 5,0  | 5,0  | 5,0  | 5,0  | 2,5  | 2,5  | 7,5  | 7,5  | 7,5  | 7,5  | 7,5  | 5,0  | 5,0  | 10,0 | 10,0 | 10,0 | 10,0 | 10,0 |
| Connected load of the entire system [kW]            | 11,2 | 11,2 | 11,2 | 11,5 | 11,5 | 11,2 | 11,5 | 16,8 | 16,8 | 16,8 | 17,1 | 17,1 | 22,4 | 23,0 | 22,4 | 22,4 | 22,4 | 23,0 | 23,0 |
| Acoustic emission* [dB]                             | < 75 | < 75 | < 75 | < 75 | < 75 | < 75 | < 75 | < 75 | < 75 | < 75 | < 75 | < 75 | < 75 | < 75 | < 75 | < 75 | < 75 | < 75 | < 75 |

\*The given sound power level was measured using the enveloping surface method, with the operator's ear or truck driver's ear in the driver's compartment, with the window open.

## Options (for additional price)

|  |   |   |   |   |   |   |   |   |   |   |   |   |   |   |   |   |   |   |   |
|--|---|---|---|---|---|---|---|---|---|---|---|---|---|---|---|---|---|---|---|
| MobyDos Compact (Flocculent Dosing System)   | ✓ | ✓ | ✓ | ✓ | ✓ | ✓ | ✓ | ✓ | ✓ | ✓ | ✓ | ✓ | ✓ | ✓ | ✓ | ✓ | ✓ | ✓ | ✓ |
| MobyDos Compact & Container                  | ✓ | ✓ | ✓ | ✓ | ✓ | ✓ | ✓ | ✓ | ✓ | ✓ | ✓ | ✓ | ✓ | ✓ | ✓ | ✓ | ✓ | ✓ | ✓ |
| Chassis Wash                                 | ✓ | ✓ | ✓ | ✓ | ✓ | - | - | ✓ | ✓ | ✓ | ✓ | ✓ | - | - | ✓ | ✓ | ✓ | ✓ | ✓ |
| Backwash (Exit Area Backwash System)         | ✓ | ✓ | ✓ | ✓ | ✓ | - | - | ✓ | ✓ | ✓ | ✓ | ✓ | - | - | ✓ | ✓ | ✓ | ✓ | ✓ |
| Manual Wash (Hose and Lance)                 | ✓ | ✓ | ✓ | ✓ | ✓ | ✓ | ✓ | ✓ | ✓ | ✓ | ✓ | ✓ | ✓ | ✓ | ✓ | ✓ | ✓ | ✓ | ✓ |
| MobyHeat FSC 1 - 3 (Winter Packages)         | ✓ | ✓ | ✓ | ✓ | ✓ | ✓ | ✓ | ✓ | ✓ | ✓ | ✓ | ✓ | ✓ | ✓ | ✓ | ✓ | ✓ | ✓ | ✓ |
| Drip Pad (Excess Water Collection System)    | ✓ | ✓ | ✓ | ✓ | ✓ | ✓ | ✓ | ✓ | ✓ | ✓ | ✓ | ✓ | ✓ | ✓ | ✓ | ✓ | ✓ | ✓ | ✓ |
| Extended Clear Width to 345 cm               | ✓ | ✓ | ✓ | ✓ | ✓ | ✓ | ✓ | ✓ | ✓ | ✓ | ✓ | ✓ | ✓ | ✓ | ✓ | ✓ | ✓ | ✓ | ✓ |
| Grid Iron Cover for Recycling Tank           | ✓ | ✓ | ✓ | ✓ | ✓ | ✓ | ✓ | ✓ | ✓ | ✓ | ✓ | ✓ | ✓ | ✓ | ✓ | ✓ | ✓ | ✓ | ✓ |
| Third Nozzle Bar                             | ✓ | ✓ | ✓ | ✓ | ✓ | - | - | ✓ | ✓ | ✓ | ✓ | ✓ | - | - | ✓ | ✓ | ✓ | ✓ | ✓ |
| Cargo Moistening System with Recycling Water | ✓ | ✓ | ✓ | ✓ | ✓ | - | - | ✓ | ✓ | ✓ | ✓ | ✓ | - | - | ✓ | ✓ | ✓ | ✓ | ✓ |
| Cargo Moistening System with Fresh Water     | ✓ | ✓ | ✓ | ✓ | ✓ | - | - | ✓ | ✓ | ✓ | ✓ | ✓ | - | - | ✓ | ✓ | ✓ | ✓ | ✓ |
| Increased Drive Through Width (300 cm)       | ✓ | ✓ | ✓ | ✓ | ✓ | - | - | ✓ | ✓ | ✓ | ✓ | ✓ | - | - | ✓ | ✓ | ✓ | ✓ | ✓ |
| Installation and Commissioning               | ✓ | ✓ | ✓ | ✓ | ✓ | ✓ | ✓ | ✓ | ✓ | ✓ | ✓ | ✓ | ✓ | ✓ | ✓ | ✓ | ✓ | ✓ | ✓ |



### MobyDick Wheel Washing

With a wide selection of customised (TailorMade) and standardised (ConLine) wheel washing systems, the MobyDick wheel washing line has been providing a suitable solution for every problem for 30 years.



### MobyDick Demucking

The washing systems in the Demucking line automatically free the frame, the underbody and the wheels or crawler tracks of vehicles from coarse debris in a matter of minutes.



### MobyDick Dust Control

MobyDick Dust Control offers a wide selection of modern canons for dust control. Typical areas of application include construction sites, materials handling sites, recycling yards, quarries, mines, steel and cement factories.



FRUTIGER Company AG  
Stegackerstrasse 26  
CH-8409 Winterthur  
Telefon +41 52 234 11 11  
Fax +41 52 234 11 00  
info@frutiger.ch  
www.mobydick.com